

**PET
PRODUCTS
PARTS LIST**



ENGINEERING - MANUFACTURING - QUALITY

BLOWER UNIVERSAL

Toll free : 1-866-454-2493

Fax : (450) 454-2477

Web Site : www.um-inc.com

VERSION: 20150929



ENGINEERING CAPABILITIES



3D printing

With or without a CAD file, UM can design and print your ideas. We give you the opportunity to have a prototype to test before spending money on parts improperly designed.

CMM measurement

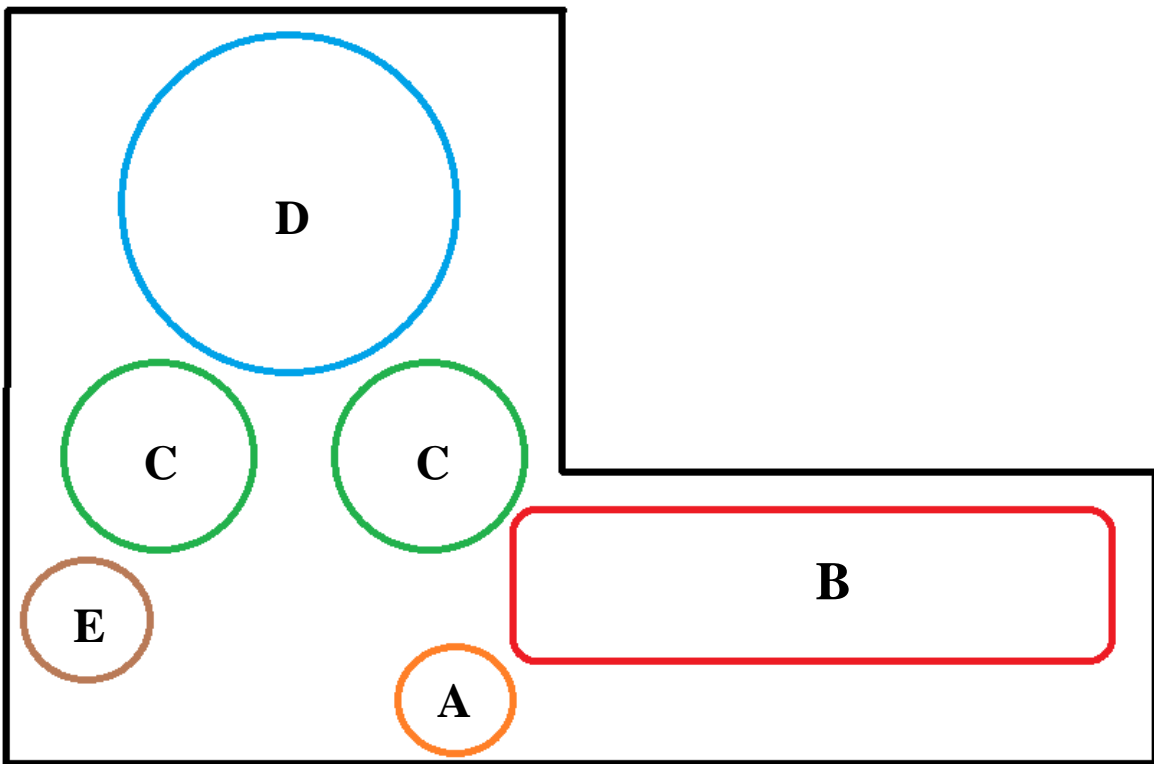
Get very precise measurements of any parts with our CMM equipment; nothing compares to its precision.



3D scan

With its portable equipment, UM can come on site and scan any complex equipment and parts.

MACHINE SECTIONS



SECTION A : ENTRY WHEEL/PREFORM CHANGE

6

SECTION B : OVEN

7

SPINDLE TIPS

7

EJECTOR

7

SECTION C : TRANSFER WHEEL

8

GRIPPERS

8

IMPROVED QUICK CHANGE TRANSFER ARM HEAD

9

SECTION D : BLOWING WHEEL	10
WATER JACKETS	11
STRETCH ROD CLAMP ASSEMBLY	12
STRETCH ROD CYLINDER	13
BLOW NOZZLE COMPONENTS (INCLUDING PDP PARTS)	14
HIGH PRESSURE VALVES	15
VALVE SPARES PARTS	16
COMPENSATION VALVE	17
LOCK & UNLOCK CAM	18
SECTION E : EXIT WHEEL	19
EXIT GUIDE	
UM GENERAL INFORMATION	20

A : ENTRY WHEEL



PREFORM CHANGE/TOOL CHANGE

UM'S ENGINEERING TEAM CAN HELP YOU DESIGN ALL THE CUSTOM PARTS REQUIRED TO CHANGE FROM ONE PREFORM TO ANOTHER.

WITH ITS EQUIPMENT AND KNOW HOW, UM'S ENGINEERING TEAM WILL KEEP ALL THE REQUIRED OEM SPECIFICATIONS.

Infeed Unit



Infeed Plate



Improved Spindle Tips



Retractable Guide



Complete Under Neck and Upper Guides



B : OVEN CHAIN

UNIVERSAL IMPROVED SPINDLE TIP

UM CAN DESIGN A GRIPPER TO PERFECTLY FIT ANY PREFORM.
SIMPLY PROVIDE A PREFORM DRAWING AND/OR SAMPLES.
2 WEEKS LEAD TIME FOR CUSTOM DESIGN



EJECTOR

UM CAN DESIGN A EJECTOR TO PERFECTLY FIT ANY PREFORM.
SIMPLY PROVIDE A PREFORM DRAWING AND/OR SAMPLES.
2 WEEKS LEAD TIME FOR CUSTOM DESIGN



C : TRANSFER WHEEL



TRANSFER GRIPPERS **PERSONALIZED COMPONENTS**

UM CAN DESIGN A PAIR OF TRANSFER GRIPPERS TO PERFECTLY FIT ANY PREFORMS



SIMPLY PROVIDE A PREFORM DRAWING AND/OR SAMPLE.

INFEEED GRIPPERS PCO 1881
UV-0002-502-10-01

OUTFEED GRIPPERS PCO 1881
UV-0002-502-20-01

IMPROVED QUICK CHANGE ARM HEAD

IMPROVED ARM HEAD S2 DESIGN

0002-502-30-00



TRANSFER ARMS ROLLERS & PARTS

- UMS-01125232901 SYNTHETIC ROLLER
- UMS-01125203101 SPACER
- UMS-01125202702 POSITION ROLLER PIN
- UMS-01125203202 SPEED ROLLER PIN
- UMS-00000013217 NUT
- UMS-01132061901 SPACER



D : BLOWING WHEEL

IMPROVED PNEUMATIC SUPPORT PLATE

OEM: 01124526305

UMS-245263

We can also supply the following individual parts

- UMS- 01116429804 Piston
- UMS- 01114876301 Centering device
- UMS- 01115006701 Ball
- UMS- 00000001758 Spring
- UMS- 00000102068 Dowell Pin
- UMS- 00000020762 O-Ring
- UMS- 00000020617 O-Ring
- UMS- 00000012533 Screw



REINFORCED/IMPROVED MOULD BASE SUPPORT

OEM: 01124042904

UMS- 01124042904



WATER JACKETS



WE DO HAVE OTHER # REFERENCE AVAILBLE. ASK OUR TEAM FOR A QUOTATION

UM CAN REVERSE ENGINEER ALL MOLD SHELL DESIGN (ALUMINUM AND STAINLESS STEEL), SIMPLY PROVIDE A SAMPLE.

STRETCH ROD CLAMP ASS'Y

IMPROVED STRETCH ROD CLAMP ASS'Y
0002-005-02-17



IMPROVED STRETCH ROD CLAMP (COLD SET)
0002-005-02-20



Individual parts can be buy separately. Ask UM for more details.



STRETCH ROD CYLINDER



UMS-STRETCHROD-UNIV

BENEFITS

- Drop-in replacement
- Insensitivity to contamination and pressure variations
- Repeatable response time
- High flow capacity of the valve to ensure fast retract or the stretching cam
- Cost Savings: Increased production, reduced labor cost and few replacement parts
- ISO compatible with MAC pilot valves

STRETCH ROD CYLINDER VALVE CONVERSION

STRETCH ROD CYLINDER SPARE KITS UMS-STRETCHROD-UNIV-KIT



BLOW NOZZLE COMPONENTS (INCLUDING PDP PARTS)

DIFFUSOR
UMS-11242291



BLOW NOZZLE TUBE SPACER
UMS-01127987701



STABILIZER AND PDP PARTS
Ask UM for more details



BLOW/PREBLOW/RECOVERY & EXHAUST VALVES AND ACCESSORIES

NEW & IMPROVED BLOW/PREBLOW/RECOVERY VALVES
UMS-131938

PISTON PEEK
UMS-00000138235



NEW & IMPROVED BLOW/PREBLOW/RECOVERY VALVES
UMS-131939



NEW & IMPROVED COMPENSATION VALVE WITH MAC PILOT VALVE
S2, S2+ & Universal

UMS-234297-N7BAR



VALVE SPARES PARTS

PISTON PEEK
OEM : 00000138235
UMS-138235



MAINTENANCE KIT(PLASTIC PISTON, PISTON PEEK AND SEAL)
OEM : 00000141762
UMS-141762



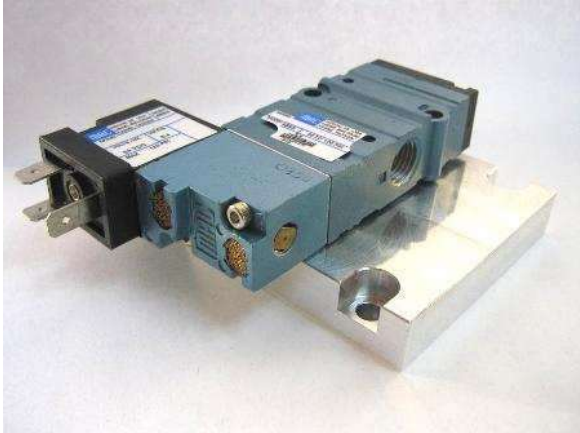
PILOT SPARE KIT (WITH MAC PILOT VALVE)
FOR BLOW/PREBLOW/RECOVERY
OEM : 00000141767
UMS-141767



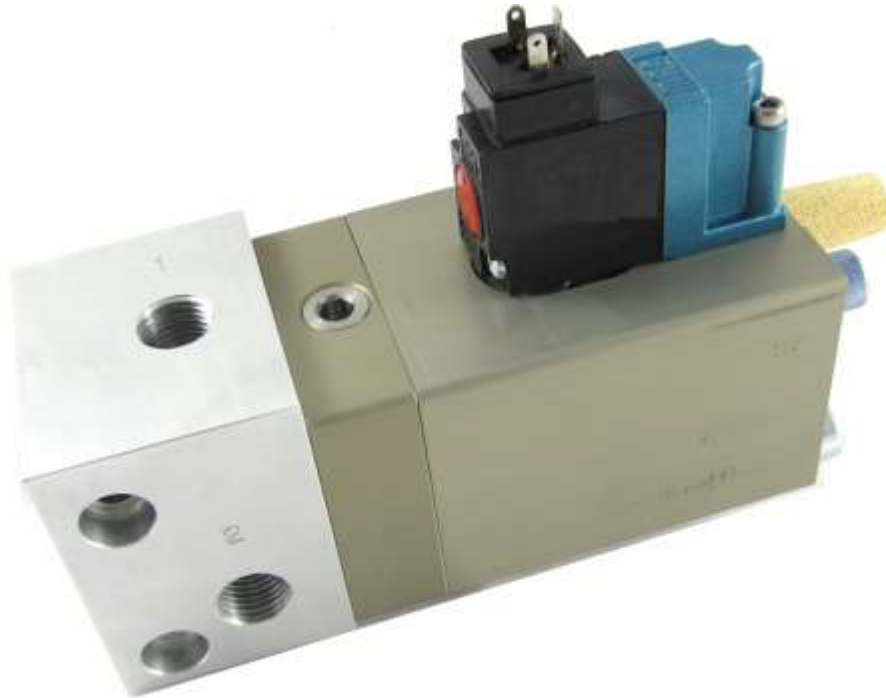
PILOT SPARE KIT (WITH MAC PILOT VALVE) FOR EXHAUST
OEM : 00000141768
UMS-141768



BLOW NOZZLE MAC 5/2 VALVE CONVERSION (ADAPTER PLATE)
ASK UM FOR MORE DETAILS



IMPROVED COMPENSATION VALVE FOR S2/S2+ & UNIVERSAL



Improved Compensation valve
UMS-234297-N7BAR

BENEFITS

- Standard MAC pilot valve
- 1 Year Warranty
- Higher longevity compared to OEM
- No core return
- More reliable compared to OEM

LOCK & UNLOCK CAM



ASK UM REPRESENTATIVE FOR AVAILABLE CAM

E : EXIT WHEEL



PREFORM CHANGE/TOOL CHANGE

UM'S ENGINEERING TEAM CAN HELP YOU DESIGN ALL THE CUSTOM PARTS REQUIRED TO CHANGE FROM ONE PREFORM TO ANOTHER.

WITH ITS EQUIPMENT AND KNOW HOW, UM'S ENGINEERING TEAM WILL KEEP ALL THE REQUIRED OEM SPECIFICATIONS.

UM GENERAL INFORMATION

About us

Founded in 1976, UM Inc has been an industry pioneer by focusing on the synergy between the skills of our engineering team and the versatility of our manufacturing department at the leading edge of technologies. This structure allows us to offer very high quality products and an enormous variety of services in any specialized areas.

Our mission

We are committed to develop and maintain a growing association with our clients, by creating new and innovative products that improve the quality of their own machinery.

Our plant



For more information, please visit our official website at www.um-inc.com