

PET PRODUCTS PARTS LIST



ENGINEERING - MANUFACTURING - QUALITY

CONTIFORM C2 (S,SK), C3

Toll free : 1-866-454-2493

Fax : (450) 454-2477

Web Site : www.um-inc.com

VERSION: 20150901



ENGINEERING CAPABILITIES



3D printing

With or without a CAD file, UM can design and print your ideas. We give you the opportunity to have a prototype to test before spending money on parts improperly designed.

CMM measurement

Get very precise measurements of any parts with our CMM equipment; nothing compares to its precision.



3D scan

With its portable equipment, UM can come on site and scan any complex equipment and parts.

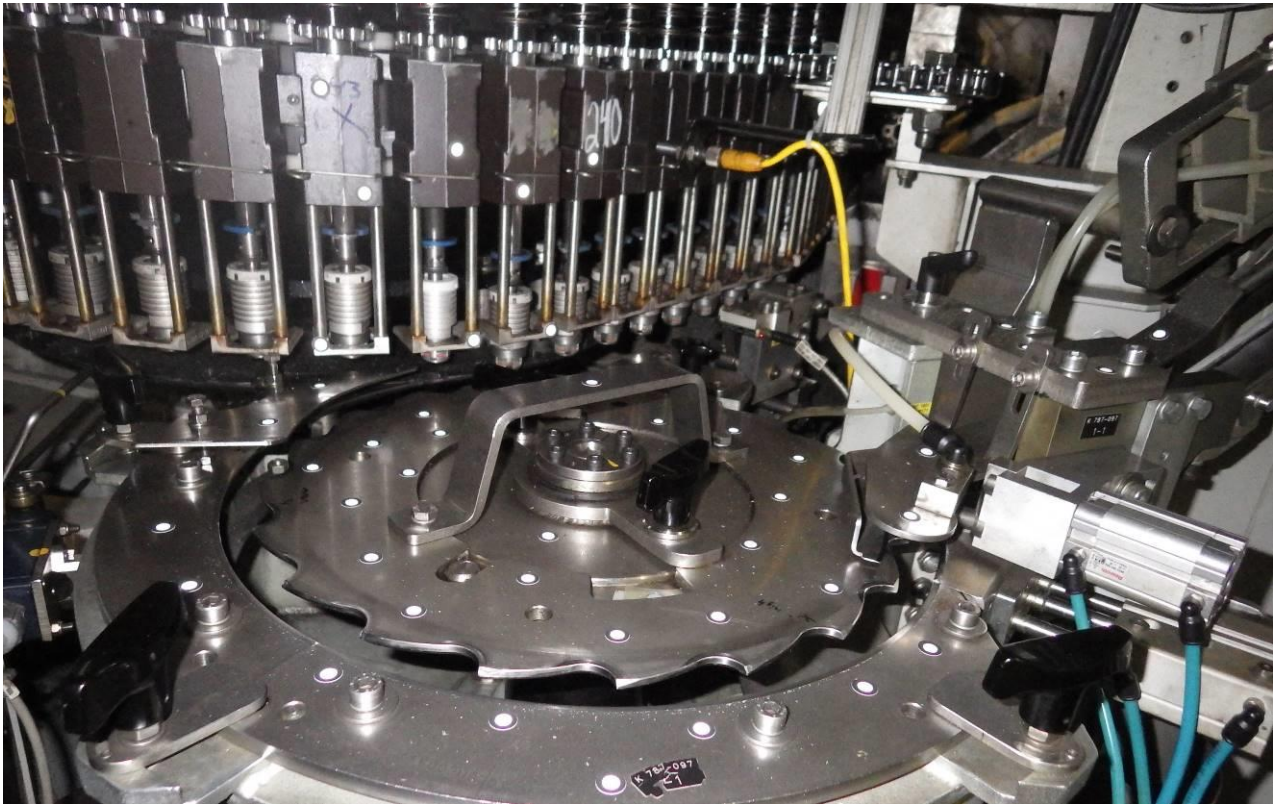
CONTIFORM C2, C3

UM ALTERNATE SPARE PARTS



ENTRY WHEEL	5
OVEN CHAIN	6
OVEN CHAIN: SPINDLE ASSY C2	
OVEN CHAIN : SPINDLE ASSY C3	7
OVEN CHAIN: CHAIN LINK ASSY	10
OVEN CHAIN: GRIPPERS	12
TRANSFER	13
CAM WHEEL & GUIDE	24
BLOWING STATION	25
WATER JACKET NEW AND REBUILD	26
UM GENERAL INFORMATION	32

ENTRY WHEEL



PREFORM CHANGE

UM'S ENGINEERING TEAM CAN HELP YOU DESIGN ALL THE CUSTOM PARTS REQUIRED TO CHANGE FROM ONE PREFORM TO ANOTHER.

WITH ITS EQUIPMENT AND KNOW HOW, UM'S ENGINEERING TEAM WILL KEEP ALL THE REQUIRED OEM SPECIFICATIONS.

OVEN CHAIN



SPINDLE ASS'Y

UMKN-2-786-32-765-1 (WITH CENTRAL SPACER HEIGHT = 12 MM)

UMKN-2-786-32-765-3 (WITH CENTRAL SPACER HEIGHT = 22 MM)

INDIVIDUAL COMPONENTS CAN BE PURCHASED, SEE PAGE V



CHAIN LINK ASS'Y

0099-002-01-00

INDIVIDUAL COMPONENTS CAN BE PURCHASED, SEE PAGE VII



GRIPPERS (SPINDLE TIP)

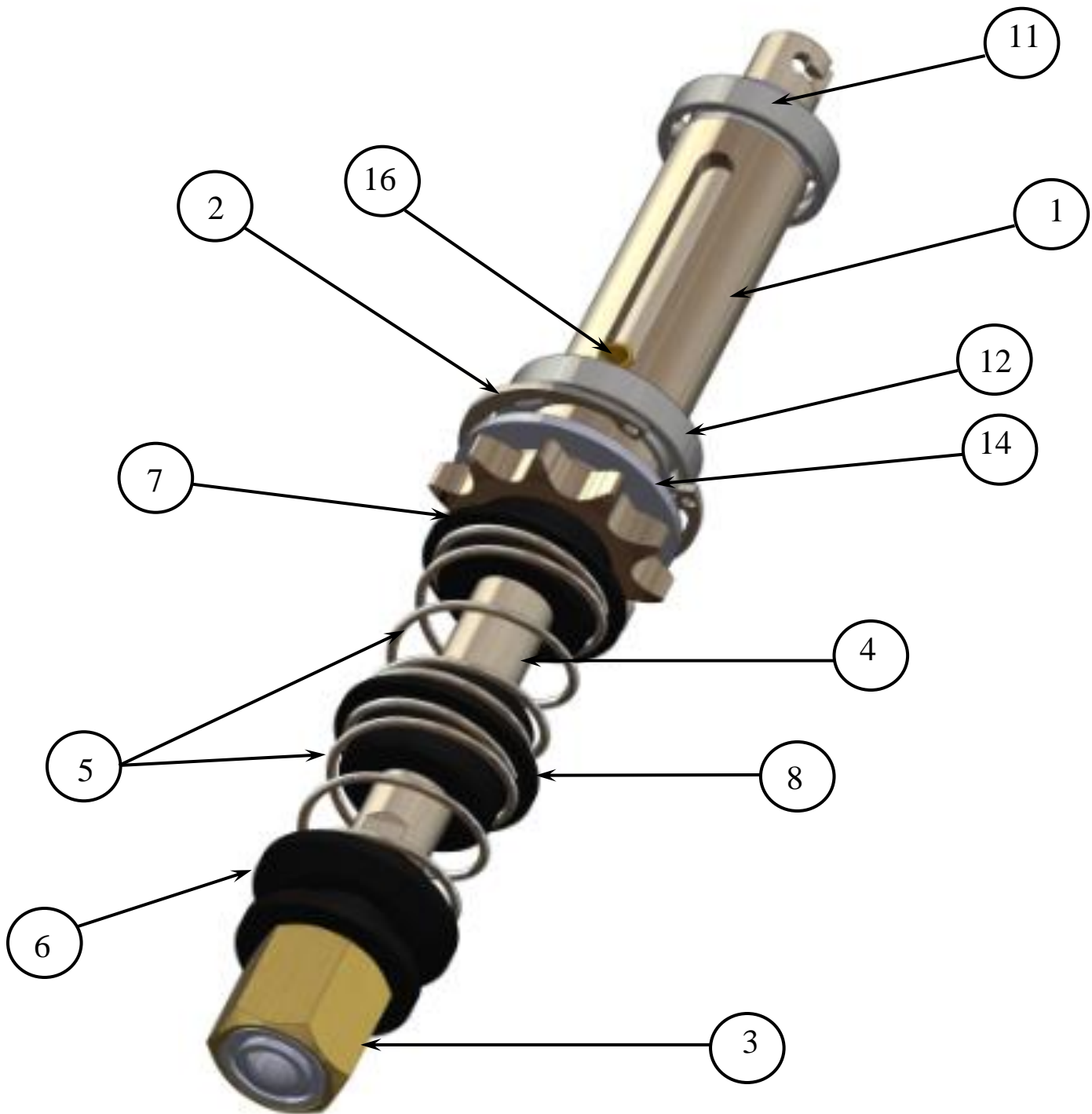
UM CAN DESIGN A GRIPPER TO PERFECTLY FIT ANY PREFORM.
SIMPLY PROVIDE A PREFORM DRAWING AND/OR SAMPLES.

INDIVIDUAL COMPONENTS CAN BE PURCHASED, SEE PAGE



OVEN CHAIN: SPINDLE ASS'Y C2

ASSEMBLY DRAWING



CHAIN SPROCKET

0099-003-01-01

INCLUDED #1 ON THE SPINDLE ASSEMBLY DRAWING



BALL SUPPORT

UMKN-0900711314

INCLUDES #3 ON THE SPINDLE ASSEMBLY DRAWING



SPINDLE BEARING LARGE

0099-003-01-02

INCLUDES #12 ON THE SPINDLE ASSEMBLY DRAWING



SPINDLE BEARING SMALL

0099-003-01-03

INCLUDES #11 ON THE SPINDLE ASSEMBLY DRAWING



SPACER

0099-003-01-04

INCLUDES #14 ON THE SPINDLE ASSEMBLY DRAWING



CIRCLIPS

0099-003-01-06

INCLUDES #2 ON THE SPINDLE ASSEMBLY DRAWING



SPRING PIN

0099-003-01-07

INCLUDES #16 ON THE SPINDLE ASSEMBLY DRAWING



MAIN SHAFT

UMKN-1-786-32-318-0

INCLUDES #4 ON THE SPINDLE ASSEMBLY DRAWING



SPRING

0099-003-01-10

INCLUDES #5 ON THE SPINDLE ASSEMBLY DRAWING



BUSHING

0099-003-01-13



CENTRAL SPACER

0099-003-01-14

INCLUDES #8 ON THE SPINDLE ASSEMBLY DRAWING

AVAILABLE IN TWO DIFFERENT HEIGHTS 12 AND 22 MM



TOP SPACER

0099-003-01-12

INCLUDES #7 ON THE SPINDLE ASSEMBLY DRAWING



BOTTOM SPACER

0099-003-01-11

INCLUDES #6 ON THE SPINDLE ASSEMBLY DRAWING



SIMPLIFY YOUR INVENTORY WITH UM SPECIAL MAINTENANCE KITS!!!

ONE INVENTORY PART # WITH EVERYTHING YOU NEED FOR
YOUR ANNUAL MAINTENANCE

SPINDLE COMPLETE WEARING PARTS

0099-003-01-90

INCLUDES #5(x2), 7, 9(x2), 16 ON THE SPINDLE ASSEMBLY DRAWING



SPINDLE WEARING PARTS

0099-003-01-92

INCLUDES #5(x2), #7, 9(x2), 11, 12, 16 ON THE SPINDLE ASSEMBLY DRAWING



SPINDLE WEARING PARTS (WITHOUT SPRINGS)

0099-003-01-93

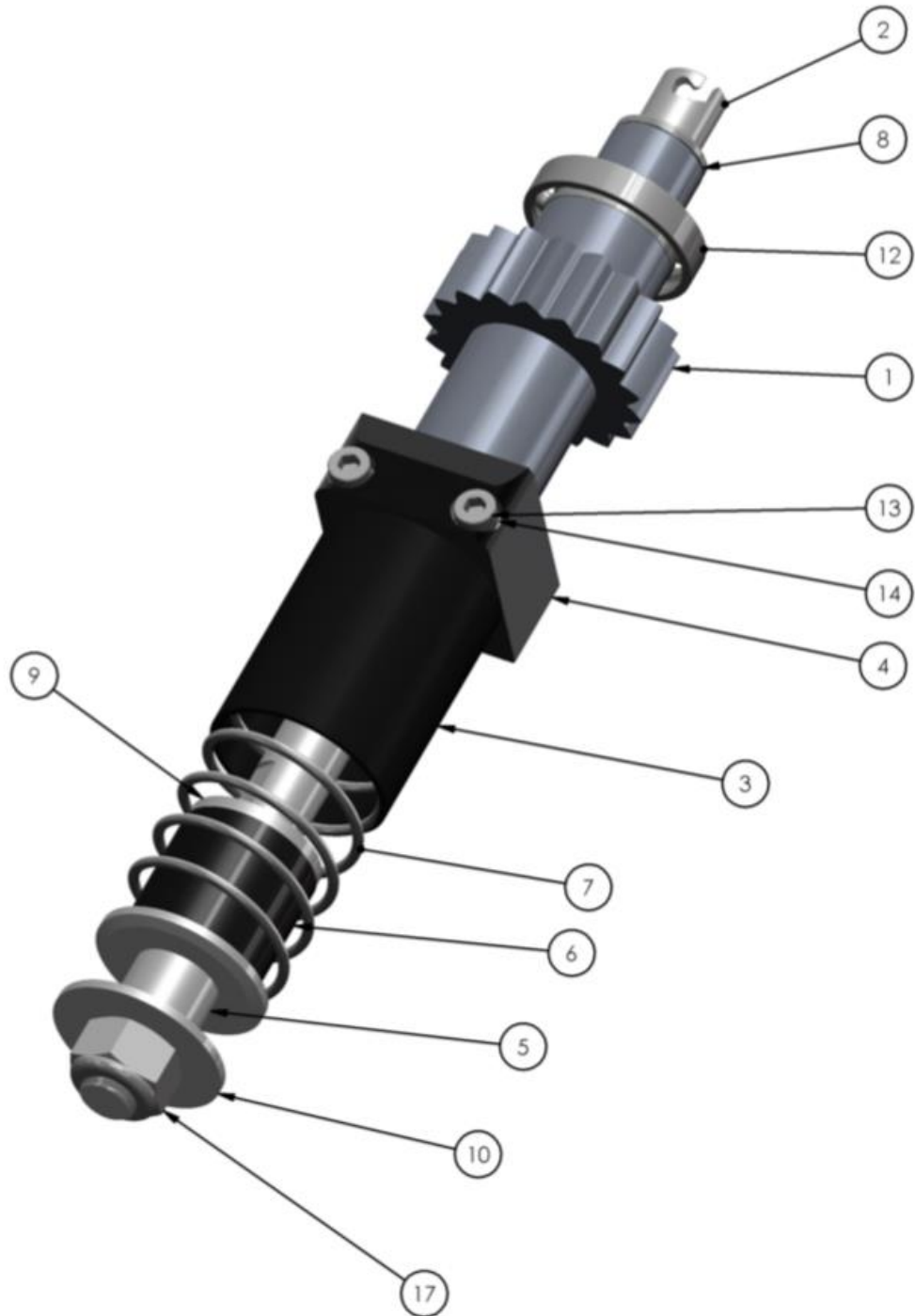
INCLUDES #7, 9(x2), 16 ON THE SPINDLE ASSEMBLY DRAWING



YOU WOULD LIKE TO GET A CUSTOM KIT...NO PROBLEM!!!
SIMPLY CONTACT A UM SALES REPRESENTATIVE AND WE'LL
SUPPORT YOU WITH YOUR REQUEST.

OVEN CHAIN: SPINDLE ASS'Y C3

ASSEMBLY DRAWING



BUSHING

0099-003-01-13



SPINDLE BEARING LARGE

0099-003-01-02

INCLUDES #12 ON THE SPINDLE ASSEMBLY DRAWING



TRAINING GEAR

0099-403-25-11

INCLUDES #1 ON THE SPINDLE ASSEMBLY DRAWING



SHORT SPACER

0099-003-01-25

INCLUDES #5 ON THE SPINDLE ASSEMBLY DRAWING



ANGLED WASHER

0099-003-01-27

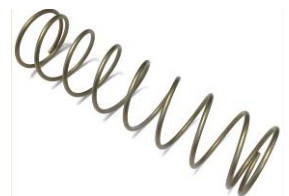
INCLUDES #10 ON THE SPINDLE ASSEMBLY DRAWING



SPRING

0099-403-25-03

INCLUDES #7 ON THE SPINDLE ASSEMBLY DRAWING



BLACK SPACER

0099-003-01-24

INCLUDES #6 ON THE SPINDLE ASSEMBLY DRAWING



FLAT WASHER

0099-003-01-26

INCLUDES #9 ON THE SPINDLE ASSEMBLY DRAWING



SPRING CAGE

0099-403-25-04

INCLUDES #3 ON THE SPINDLE ASSEMBLY DRAWING



BEARING CAGE

0099-403-25-05

INCLUDES #4 ON THE SPINDLE ASSEMBLY DRAWING



SPINDLE SHAFT

0099-003-01-23

INCLUDES #2 ON THE SPINDLE ASSEMBLY DRAWING



TIP END FLAT WASHER

0099-403-25-06

INCLUDES #8 ON THE SPINDLE ASSEMBLY DRAWING



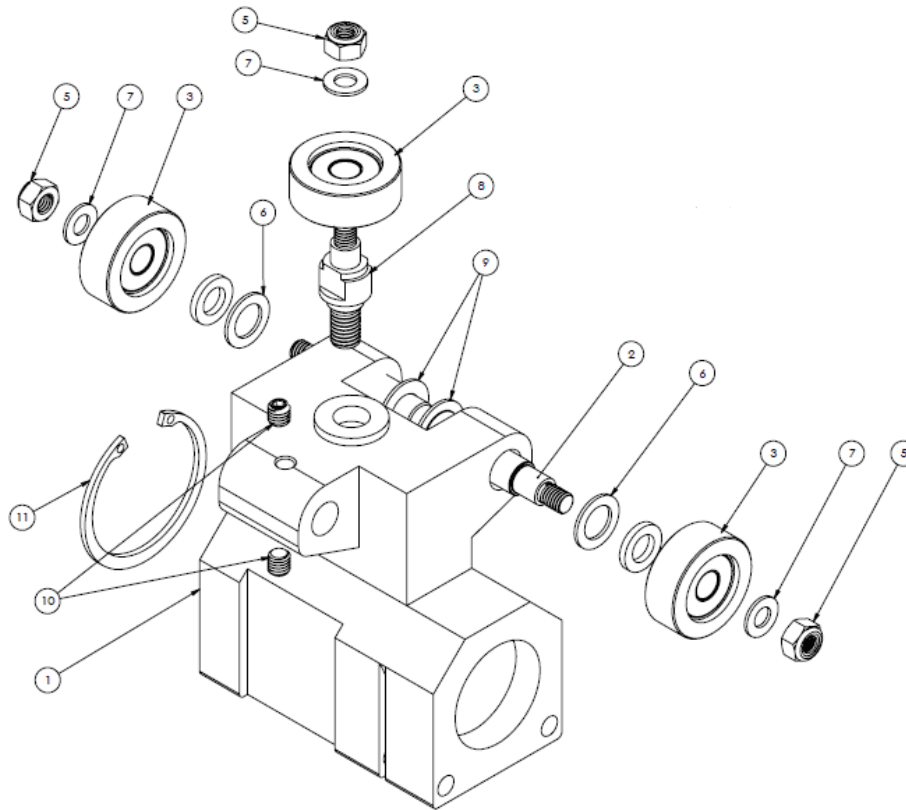
SAFETY BOLT

INCLUDES #17 ON THE SPINDLE ASSEMBLY DRAWING



OVEN CHAIN: CHAIN LINK ASS'Y

ASSEMBLY DRAWING



OVEN CHAIN REPLACEMENT PARTS (WITHOUT SIDE SHAFT)

0099-002-01-15

INCLUDES #2, 3(x3), 5(x3), 6(x2), 7(x2), 9(x2) ON ASSEMBLY DRAWING



INDIVIDUAL COMPONENTS CAN BE PURCHASED, SEE PAGE IX

OVEN CHAIN COMPLETE REPLACEMENT PARTS

0099-002-01-18

INCLUDES #2, 3(x3), 5(x3), 6(x2), 7(x2), 8, 9(x2) ON THE ASSEMBLY DRAWING



CHAIN LINK

UMKN-0900569396

INCLUDES #1 ON ASSEMBLY DRAWING



OVEN CHAIN WHEEL

UMKN-0900843069

INCLUDES #3 ON THE ASSEMBLY DRAWING



OVEN CHAIN SHAFT LINK

0099-002-01-01

INCLUDES #2 ON THE ASSEMBLY DRAWING



OVEN CHAIN SIDE WHEEL SHAFT

0099-002-01-03

INCLUDES #8 ON THE ASSEMBLY DRAWING



OVEN CHAIN BUSHING

0099-002-01-05

INCLUDES #9 ON THE ASSEMBLY DRAWING



OVEN CHAIN COOLING SHIELD

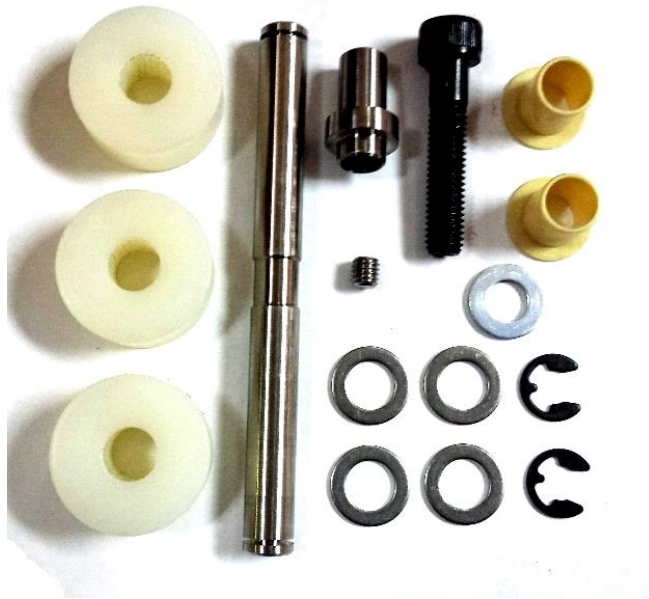
CUSTOM COMPONENT

UM CAN DESIGN A COOLING SHIELD TO PERFECTLY FIT ANY PREFORM
SIMPLY PROVIDE A PREFORM DRAWING AND/OR SAMPLE.



OVEN CHAIN KITS

(OTHER MODELS AVAILABLE)



OVEN CHAIN KITS

UMKN-0-900-37-702-2

INCLUDES ALL THE COMPONENTS SHOWN INTO PICTURES ABOVE.

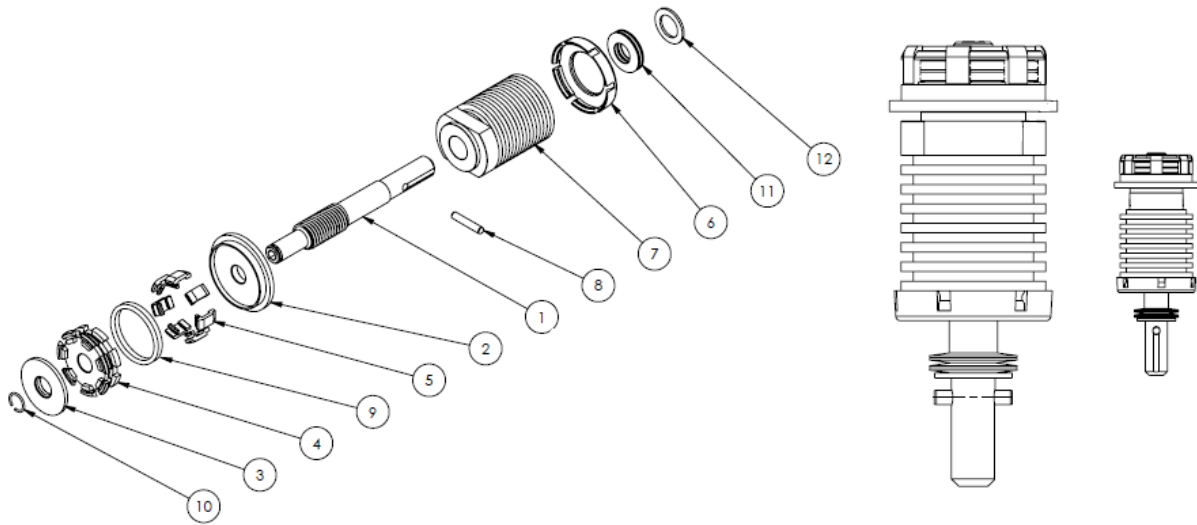
OVEN CHAIN WHEEL

UMKN-0-900-866-527



OVEN CHAIN: GRIPPERS

ASSEMBLY DRAWING



GRIPPERS BODY

UMKN-0900-966-245

INCLUDES #7 ON THE GRIPPERS ASSEMBLY DRAWING



ALL OTHER GRIPPER COMPONENTS CAN BE PROVIDED UPON REQUEST.

**SIMPLY PROVIDE YOUR PREFORM DRAWING TO UM ENGINEERING TEAM
AND WE WILL MAKE SURE TO MEET YOUR REQUEST.**

TRANSFER

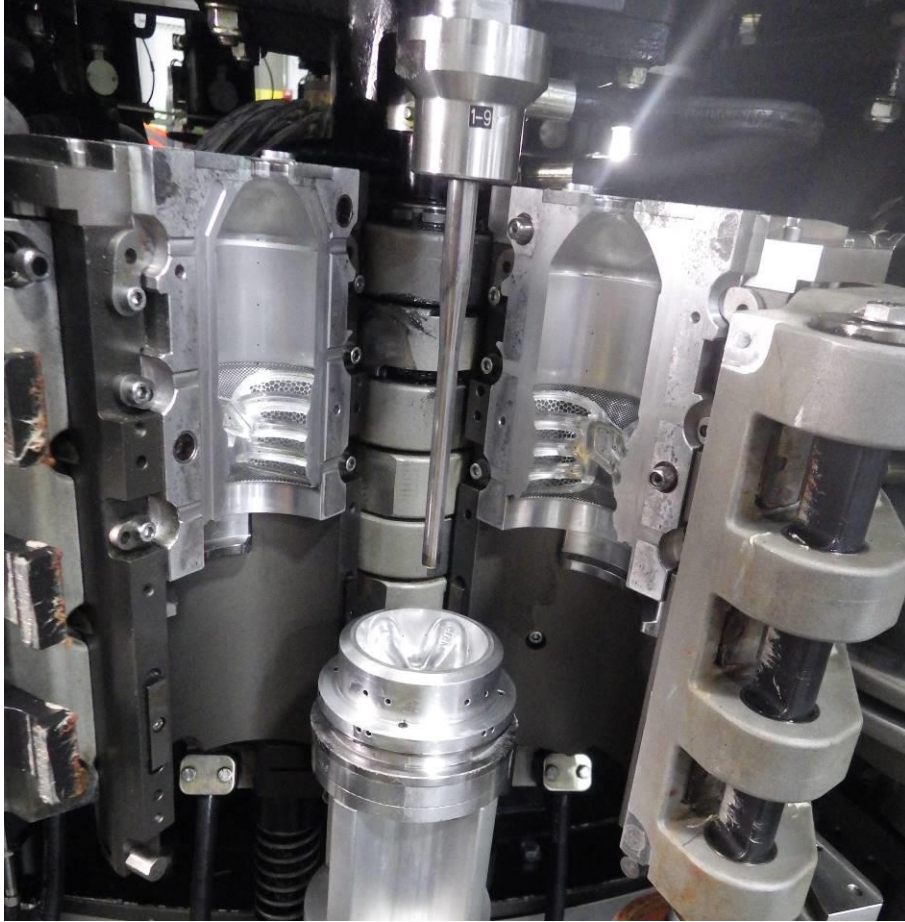
TRANSFER GRIPPERS CUSTOM COMPONENTS

UM CAN DESIGN A PAIR OF TRANSFER
GRIPPERS TO PERFECTLY FIT ANY PREFORMS.

SIMPLY PROVIDE A PREFORM DRAWING
AND/OR A SAMPLE.



BLOWING STATION



SOLENOID VALVE CONTIFORM SK
0099-007-01-00



SOLENOID VALVE CONTIFORM S
0099-007-03-00



VALVE CONTIFORM S WEAR PART KITS # 698994
UMKN-0901034005



AIR DISTRIBUTOR REBUILD

UMKN-11177506-007

INCLUDES:

NEW SEALS, RESURFACING OF DAMAGED SURFACES, FULLY TESTED, 3-MONTH WARRANTY



VALVE PISTON

UMKN-45907364



COMPENSATION VALVES REBUILD

0099-007-02-00

INCLUDES:

NEW PISTON, REBUILT INNER BORE, FULLY TESTED



VALVES CYLINDER GUIDE

UMKN-48734444



VALVES CYLINDER GUIDE

UMKN-48734558



STRETCH ROD BUSHING

UMKN-1780500670



STRETCH ROD BUSHING

UMKN-1788331140



VALVES CYLINDER GUIDE CONTIFORM S

0099-007-02-21



KRONES PISTON AND CYLINDER GUIDE ASSY, P1

UMKN-0901087257

ALSO SOLD SEPARATELY

PISTON: UMKN-0901087259

CYLINDER GUIDE: 0099-007-02-49



KRONES PISTON AND CYLINDER GUIDE ASSY, P2

UMKN-0901087559-A

ALSO SOLD SEPARATELY

PISTON: UMKN-0901087259

CYLINDER GUIDE: 0099-007-02-51



KRONES PISTON AND CYLINDER GUIDE ASSY, P2,P3

UMKN-0901203314

ALSO SOLD SEPARATELY

PISTON: UMKN-45907364

CYLINDER GUIDE: 0099-007-02-50



BLOWING STATION : WATER JACKETS

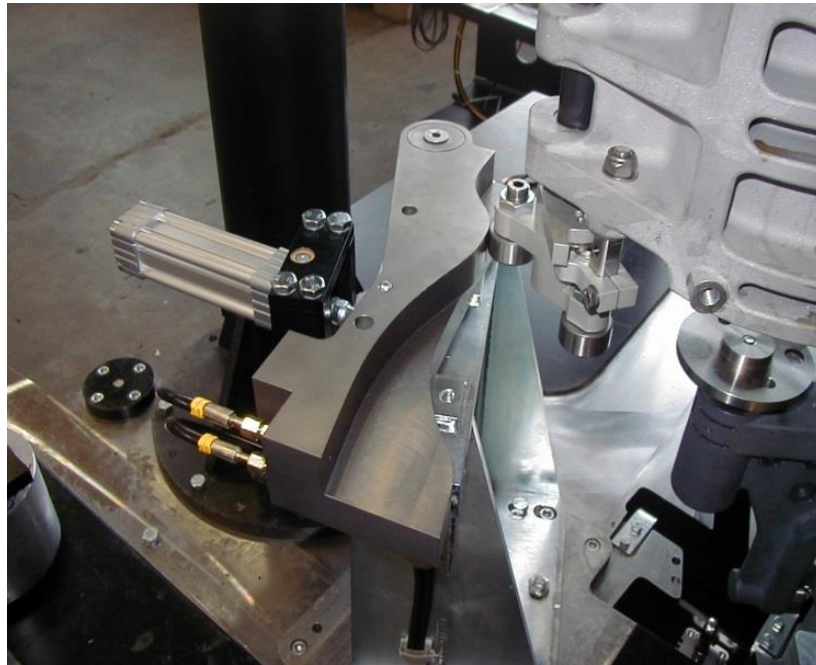
WATER JACKETS

MADE WITH AN IMPROVED GRADE OF MATERIAL

SAME WARRANTY AS OEM



CAM WHEEL & GUIDES



GUIDE CONTIFORM S
UMKN-0-901-288-779



ACTUATOR WHEEL



CAM FOLLOWER



UM GENERAL INFORMATION

About us

Founded in 1976, UM Inc has been an industry pioneer by focusing on the synergy between the skills of our engineering team and the versatility of our manufacturing department at the leading edge of technologies. This structure allows us to offer very high quality products and an enormous variety of services in any specialized areas.

Our mission

We are committed to develop and maintain a growing association with our clients, by creating new and innovative products that improve the quality of their own machinery.

Our plant (during summer...☺)



For more information, please visit our official website at www.um-inc.com