

**PET  
PRODUCTS  
PARTS LIST**



***ENGINEERING - MANUFACTURING - QUALITY***

**BLOWER S1**

Toll free : 1-866-454-2493

Fax : (450) 454-2477

Web Site : [www.um-inc.com](http://www.um-inc.com)

VERSION: 2015040





# ***ENGINEERING CAPABILITIES***



## **3D printing**

With or without a CAD file, UM can design and print your ideas. We give you the opportunity to have a prototype to test before spending money on parts improperly designed.

## ***CMM measurement***

Get very precise measurements of any parts with our CMM equipment; nothing compares to its precision.



## **3D scan**

With its portable equipment, UM can come on site and scan any complex equipment and parts.

# BLOWER S1

## *UM ALTERNATE SPARE PARTS*



ENTRY WHEEL	3
OVEN CHAIN	4
OVEN CHAIN: QUICK CHANGE	5
OVEN CHAIN: NON QUICK CHANGE	8
OVEN CHAIN: COMPENSATION SYSTEM	11
OVEN CHAIN: GRIPPERS	12
WATER ROTARY UNION	13
BLOWING STATION	14
BLOWING STATION: WATER JACKETS	16
UM GENERAL INFORMATION	22

# ENTRY WHEEL



## PREFORM CHANGE

UM'S ENGINEERING TEAM CAN HELP YOU DESIGN ALL THE CUSTOM PARTS REQUIRED TO CHANGE FROM ONE PREFORM TO ANOTHER.

WITH ITS EQUIPEMENT AND KNOW HOW, UM'S ENGINEERING TEAM WILL KEEP ALL THE REQUIRED OEM SPECIFICATIONS.

# OVEN CHAIN

## CHAIN LINK ASS'Y (QUICK CHANGE)

INDIVIDUAL COMPONENTS CAN BE PURCHASED, SEE PAGE 5

---



## CHAIN LINK ASS'Y (NON QUICK CHANGE)

INDIVIDUAL COMPONENTS CAN BE PURCHASED, SEE PAGE 8

---



## IMPROVED SPINDLE TIP

UM CAN DESIGN A GRIPPER TO PERFECTLY FIT ANY PREFORM.  
SIMPLY PROVIDE A PREFORM DRAWING AND/OR SAMPLES.

---



## EJECTOR

UM CAN DESIGN AN EJECTOR TO PERFECTLY FIT ANY PREFORM.  
SIMPLY PROVIDE A PREFORM DRAWING AND/OR SAMPLES.

---



# OVEN CHAIN: CHAIN LINK ASS'Y NON QUICK CHANGE



**MAIN AXLE** (MODEL 634450)  
UMS-1063444400  
INCLUDES # **1** ON CHAIN LINK ASSY DRAWING

---



**CYLINDER**  
UMS-01061621700  
INCLUDES # **10** ON CHAIN LINK ASSY DRAWING

---



**SPHERICAL ROLLER**  
UMS-01064499500  
INCLUDES # **3** ON CHAIN LINK ASSY DRAWING

---



**SPROCKET**  
UMS-1062916500  
INCLUDES # **9** ON CHAIN LINK ASSY DRAWING

---



**SELF-LUBRICATED BEARING**  
UMS-1077  
INCLUDES # **7** ON CHAIN LINK ASSY DRAWING

---



**O-RING**  
UMS-22279  
INCLUDES # ON CHAIN LINK ASSY DRAWING

---



**NUT**  
UMS-01074608002  
INCLUDES # **15** ON CHAIN LINK ASSY DRAWING

---



**SCREW**  
UMS-11845  
INCLUDES # **16** ON CHAIN LINK ASSY DRAWING

---





## WASHER

UMS-14136

INCLUDES # **17** ON CHAIN LINK ASSY DRAWING

---



## SPRING

UMS-01062694800

INCLUDES # **8** ON CHAIN LINK ASSY DRAWING

---



## COVER

UMS-01061622100

INCLUDES # **5** ON CHAIN LINK ASSY DRAWING

---



## SPRING PIN

UMS-14666

INCLUDES # **18** ON CHAIN LINK ASSY DRAWING

---



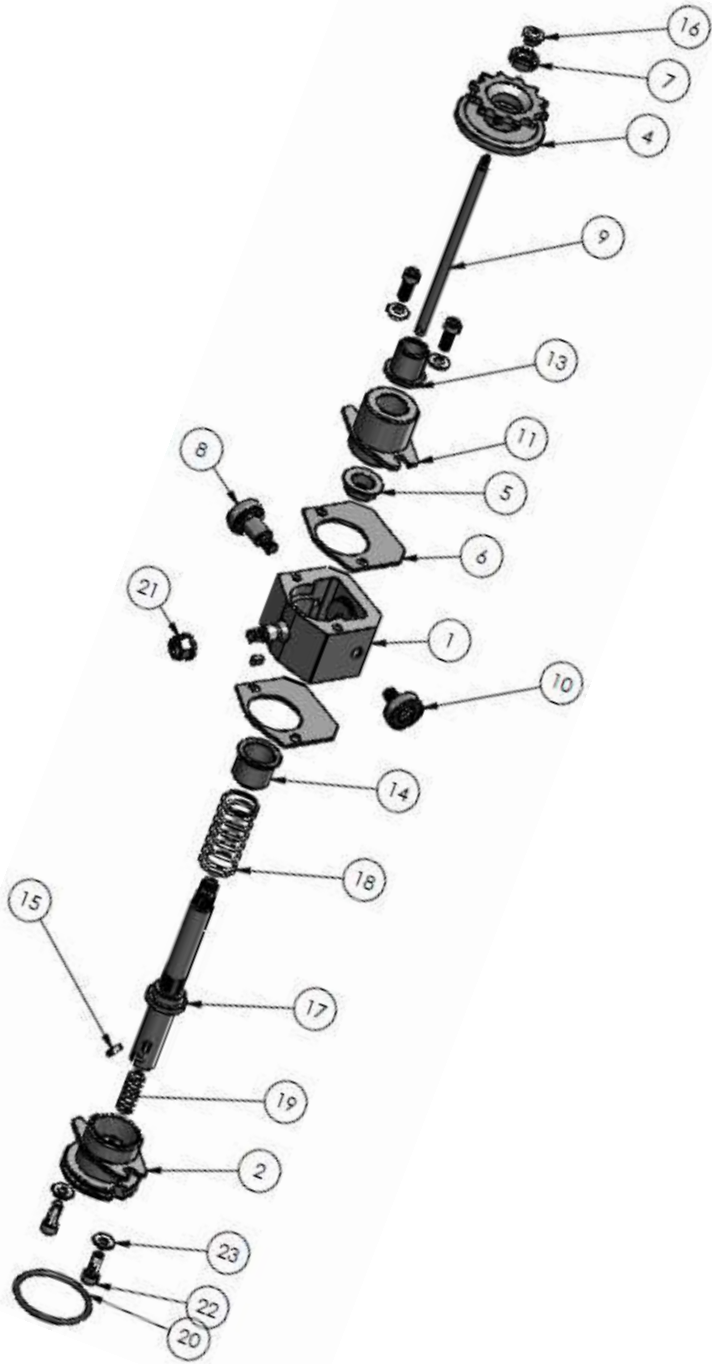
## BODY

UMS-010620770

INCLUDES # **2** ON CHAIN LINK ASSY DRAWING



# OVEN CHAIN: CHAIN LINK ASS'Y QUICK CHANGE



**MAIN AXLE** (MODEL 666042)  
UMS-066368701  
INCLUDES # **17** ON CHAIN LINK ASSY DRAWING

---



**SHEATH**  
UMS-01066353700  
INCLUDES # ON CHAIN LINK ASSY DRAWING

---



**PIN**  
UMS-659054  
INCLUDES # **15** ON CHAIN LINK ASSY DRAWING

---



**SHAFT**  
UMS-655796  
INCLUDES # **9** ON CHAIN LINK ASSY DRAWING

---



**SPRING**  
UMS-01062694800  
INCLUDES # **18** ON CHAIN LINK ASSY DRAWING

---



**SPINDLE SPRING**  
UMS-01065055800  
INCLUDES # **19** ON CHAIN LINK ASSY DRAWING

---



**CASTLE LOCK NUT**  
UMS-13323  
INCLUDES # **7** ON CHAIN LINK ASSY DRAWING

---



**STOP NUT**  
UMS-01066339202  
INCLUDES # **16** ON CHAIN LINK ASSY DRAWING

---



**CYLINDER UPPER**  
UMS-10663528  
INCLUDES # **2** ON CHAIN LINK ASSY DRAWING

---



## CYLINDER LOWER

UMS-10673003

INCLUDES # **11** ON CHAIN LINK ASSY DRAWING

---



## SELF-LUBRICATED BEARING 20x22

UMS-1077

INCLUDES # **13** ON CHAIN LINK ASSY DRAWING

---



## SELF-LUBRICATED BEARING 24x20

UMS-1159

INCLUDES # **14** ON CHAIN LINK ASSY DRAWING

---



## O-RING

UMS-22279

INCLUDES # **20** ON CHAIN LINK ASSY DRAWING

---



## NUT

UMS-01074608002

INCLUDES # **21** ON CHAIN LINK ASSY DRAWING

---



## SPHERICAL ROLLER

UMS-01064499500

INCLUDES # **4** ON CHAIN LINK ASSY DRAWING

---



## SPROCKET

UMS-1065579700

INCLUDES # **4** ON CHAIN LINK ASSY DRAWING

---



## COVER

UMS-01061622100

INCLUDES # **6** ON CHAIN LINK ASSY DRAWING

---



## WASHER

UMS-01062703900

INCLUDES # **5** ON CHAIN LINK ASSY DRAWING

---





# COMPENSATION SYSTEM



**OEM** thick version (S1 SBO 4 - SBO16)



**OEM** thin version (S1 SBO 24)



**Improved version (all machines)**

IMPROVED COMPENSATION BARS (PAIR)  
(QUICK CHANGE)

0002-079-07-05



RUBBER KIT –COMPENSATION SYSTEM  
(QUICK CHANGE)

0002-079-07-34



IMPROVED COMPENSATION BARS (PAIR)  
(NON QUICK CHANGE)

0002-079-01-34



RUBBER KIT - COMPENSATION SYSTEM  
(NON QUICK CHANGE)

0002-079-01-41



SECURITY PLATE FOR COMPENSATION SYSTEM  
(NON QUICK CHANGE)

0002-079-01-36



# TRANSFER GRIPPERS



## Benefits

- OEM EQUIVALENT QUALITY
- AVAILABLE IN DIFFERENT FINISHES IF MACHINE IS EQUIPPED WITH CAMERA DETECTOR
- NO SAMPLE REQUIRED FOR PRODUCTION
- COMPETITIVE PRICES
- 3D PRINTED SAMPLES AVAILABLE FOR DEVELOPMENT PROJECTS

# WATER ROTARY UNION REBUILD



**UM TAKES CARE OF SHIPPING YOU A STOCK REBUILT UNIT AND UPON RECEPTION AND INSTALLATION AT YOUR PLANT, YOU SHIP US YOUR DAMAGED WATER ROTARY UNION. WHEN WE RECEIVE IT, WE WILL EVALUATE IT, INSPECT IT AND REBUILD IT.**

**HERE ARE THE THINGS WE DO:**

- NEW INNER BEARINGS, SEALS AND WEAR BANDS ARE INSTALLED
- AN INSPECTION IS DONE ON ALL BEARING SEATS AND WEAR BAND SURFACES TO EVALUATE IF A COMPLETE REPAIR IS NEEDED.
- ALL SURFACES ARE POLISHED AND ALL THREADS AND PORTS ARE INSPECTED TO AVOID LEAKING ISSUES.
- EACH UNIT IS TESTED FOR LEAKAGE PRIOR TO SHIPMENT.

# BLOWING STATION- GUPM

FINGER – LOCKING GUPM  
UMS-622922

---



ROLLER SUPPORT -LOCKING GUPM  
UMS- 622921

---



STROKE PIN -LOCKING GUPM  
UMS-621988

---



SKID -LOCKING GUPM  
UMS-624804

---



STOP -LOCKING GUPM  
UMS- 624600

---



SHAFT -LOCKING GUPM  
UMS-622920

---



FINGER -LOCKING GUPM  
UMS-656316

---





# BELL IMPROVEMENT



## OEM

- Risk of damage of neck finish with OEM design
- Precise adjustment needed to avoid any air leak



## UM<sub>INC.</sub>

- UM design offers a damper system to absorb the energy from the preform once in contact
- Plug & play design
- Reduces the risk of damage to the preform

# BLOWING STATION: NEW WATER JACKETS

LEFT SIDE MOLD SHELL  
UMS-01117166401



---

RIGHT SIDE MOLD SHELL  
UMS-01117166301



UM CAN REVERSE ENGINEER ALL MOLD SHELL DESIGN (ALUMINUM AND STAINLESS STEEL), SIMPLY PROVIDE A SAMPLE.

# BLOWING STATION WATER JACKET REBUILD

SAME WARRANTY AS OEM

## OEM Problems

- Wears on top section which aligns the mold.
- Mold is not positioned properly.
- Might result in process issues with finished product.

## UNN<sup>INC.</sup> Solutions

- Insertion of a hard-plated ring to bring back original dimensions.
- Increased life cycle as the material is harder.
- Significant cost savings.



# 3-WAY VALVE

UMS-010655777



## Benefits

- IMPROVED INTERNAL DESIGN FOR BETTER LONGEVITY
- COMPETITIVE PRICE
- NO CORE RETURN

## OEM 3-WAY VALVE REPAIR KIT

OEM-01995258601

UMS-01995258601





# STATION PINION



UMS-01111616501

# PINION AXLE



UMS-01111616801

# UM GENERAL INFORMATION

## About us

Founded in 1976, UM Inc has been an industry pioneer by focusing on the synergy between the skills of our engineering team and the versatility of our manufacturing department at the leading edge of technologies. This structure allows us to offer very high quality products and an enormous variety of services in any specialized areas.

## Our mission

We are committed to develop and maintain a growing association with our clients, by creating new and innovative products that improve the quality of their own machinery.

## Our plant (during summer...😊)



For more information, please visit our official website at [www.um-inc.com](http://www.um-inc.com)